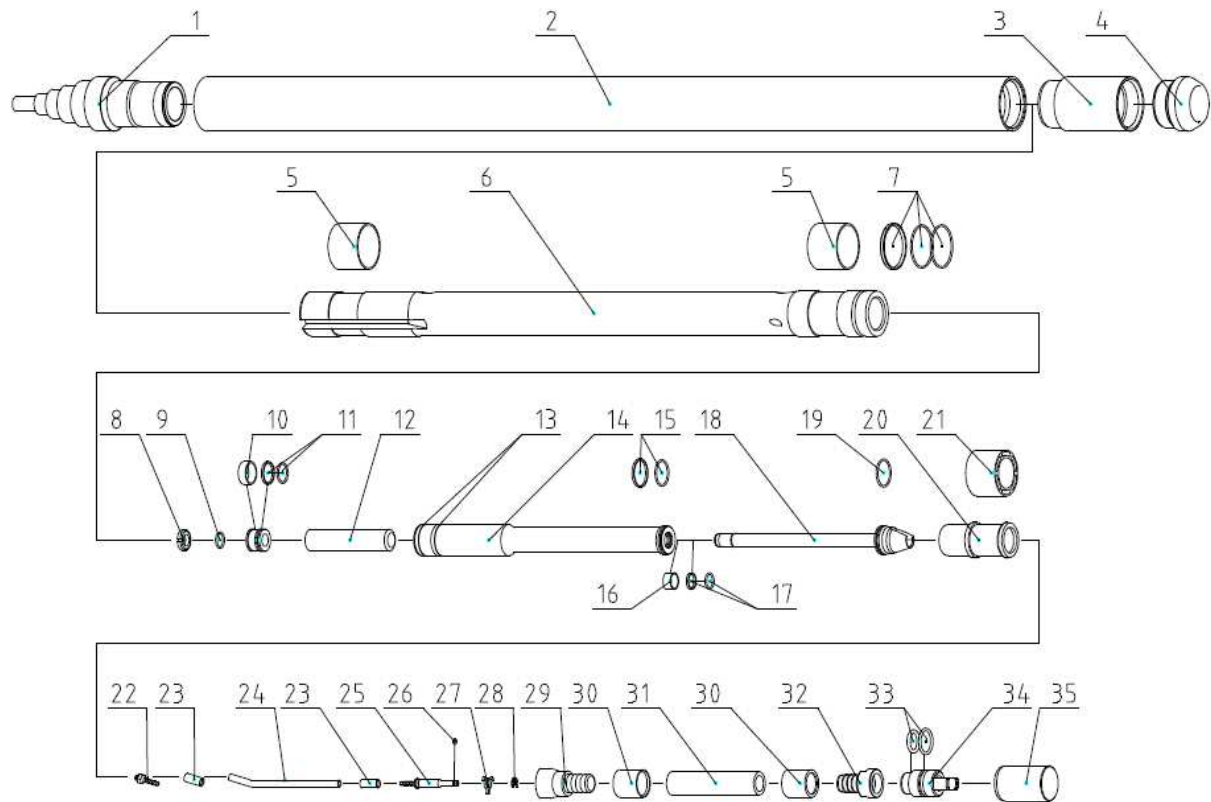


MAX K65 – replacement of Short hose



1. Unscrew End screw **(4)** using Round tool and hook tool.
2. Remove End screw **(4)** then remove Controller by pulling the hose **(31)**.
3. Mount Controller in clamp, by holding the controller for the Hose connector **(32)**.
4. Unscrew the Screw **(34)** using special service tool. Remove Screw **(34)**.
5. Remove the Control tube security **(28)** from Control tube connection nipple **(25)**. Remove the Control tube guide piece **(27)**. Remove the Controller from clamp.
6. Mount the Hexagonal key S=9 mm in clamp, vertically. Put the Controller onto the Hexagonal key in such a way that mount Steering tube **(18)**.
7. Unscrew the Hose connection **(29)** using open end wrench s=36mm.

Assembly should be carried out in reverse order. All threaded connections should be secured against loosening by protective sealant (we recommended LOCTITE 577).

CONTACT:

tel.: +48 58 / 694 05 15
tel.kom.: 607 451 902

fax: +48 58 / 694 05 96
tel.kom.: 607 451 900

mail: kret@terma-max.com
tel. kom.: 607 451 433