

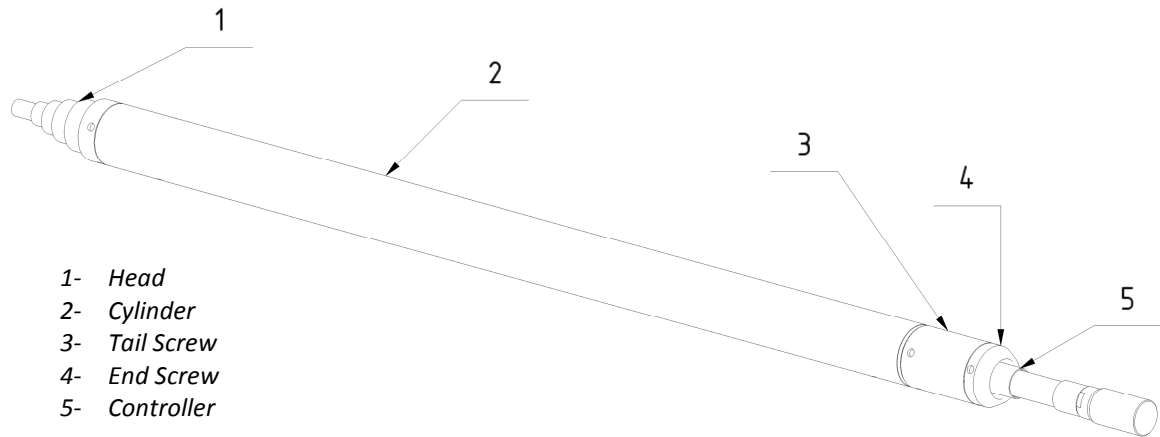


**TERMA**  
SINCE 1990

# **MAX** *Drilling Power*

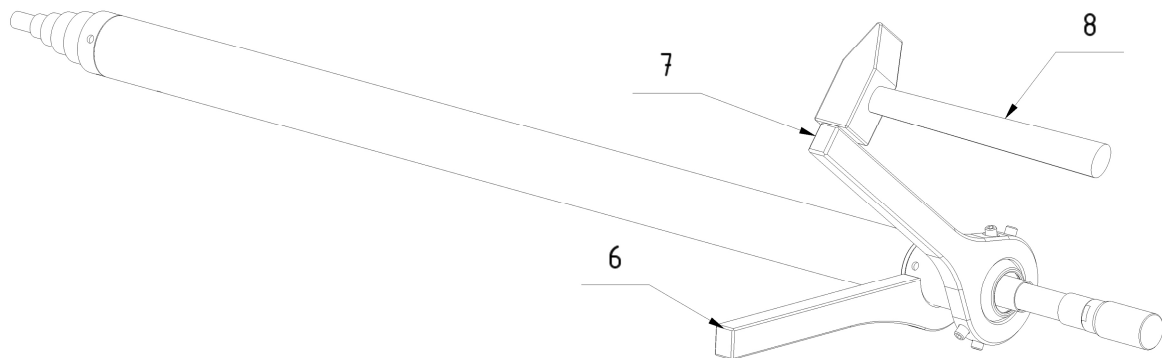
***Assembly and disassembly  
of the MAX machine  
(based on K65)***

## I. Disassembly of MAX K65:



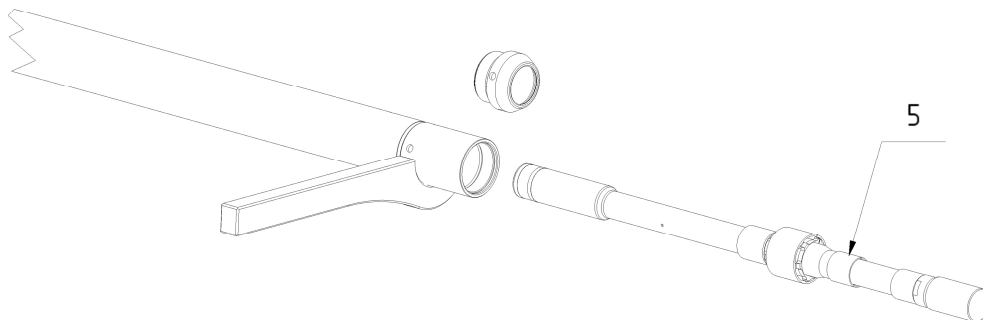
**Drawing 1.** MAX K65

1. Put MAX K65 on a solid and stable surface.
2. Put the Hook Tool **6** (*Drawing 2*) on Tail Screw **3** and Round Tool **7** on End Screw **4**.



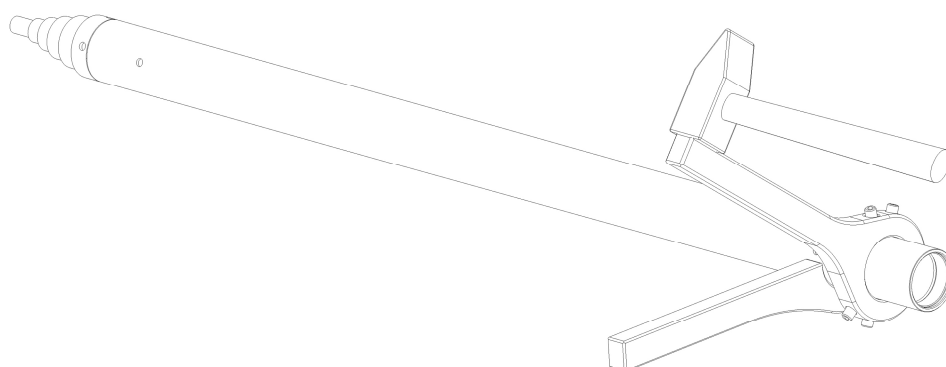
**Drawing 2.** Disassembly of End Screw

3. Make sure that all mandrels on Hook and Round Tools are in the correct slots of Tail Screw and End Screw.
4. Use hammer **8** to start of unscrewing of End Screw **4**, then unscrew End Screw **4**.
5. Remove the Controller **5** (*Drawing 3*)



**Drawing 3.** Disassembly of Controller

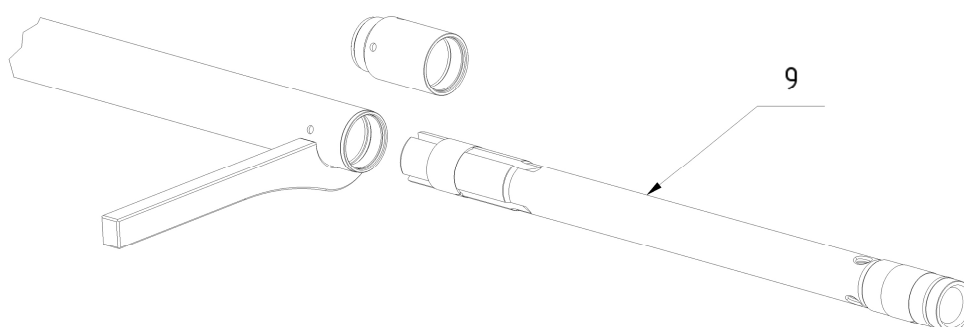
6. Put the Hook Tool **6** (*Drawing 2*) on Cylinder **2** and Round Tool **7** on Tail Screw **3**.



**Drawing 4.** *Disassembly of Tail Screw*

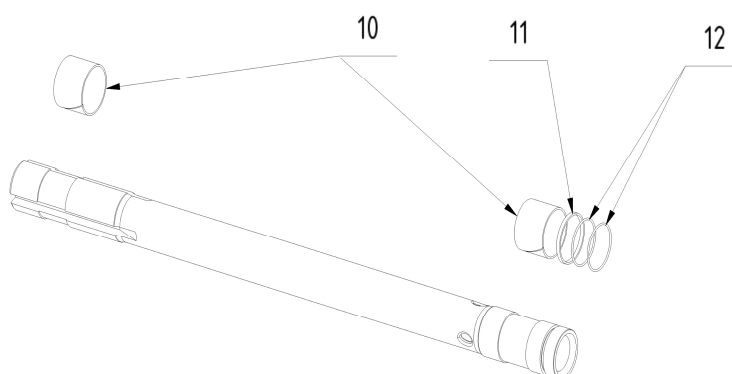
7. Make sure that all mandrels on Hook and Round Tools are in the correct slots of Tail Screw and Cylinder.

8. Use hammer 7 to start of unscrewing of Tail Screw, then unscrew Tail Screw.



**Drawing 5.** *Disassembly of Piston*

9. Remove the piston **9** (*Drawing 5*).



**Drwaing 6.** *Disassembly of sealing and sliding elements*

10. Remove Sliding Elements **10**, Sealing Elements **11** and **12** (*Drawing 6*).

The Sliding Elements and Sealing Elements are depending on the MAX machine. See Table 1.

MAX MACHINE	Sliding Rings		Sealing Rings			
	Teflon		Teflon		o -ring	
	Size	Quantity	Size	Quantity	Size	Quantity
<b>K65</b>	Ø55	2	Ø55	1	Ø48x2	2
<b>K75S</b>	Ø64	2	Ø64	1	Ø55x2	2
<b>K95S</b>	Ø80	2	Ø80	1	Ø69x3	2
<b>K130S</b>	Ø110	2	Ø110	1	Ø95x3	2
<b>K160S</b>	Ø134	3	Ø134	1	Ø121x3,5	2
<b>K180S</b>	Ø150	3	Ø150	1	Ø136x3,5	2

**Table 1.** Summary of sliding and sealing elements

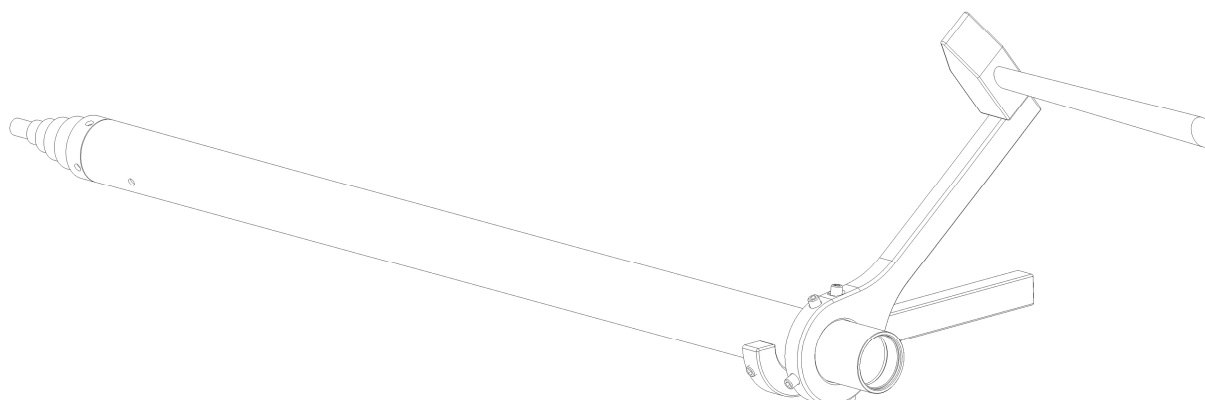
## II. Assembly of MAX K65:

1. Thoroughly clean the inside surfaces of the Cylinder **2**.
2. Thoroughly clean the inside and outside surfaces of Piston **9**.
3. Put Sealing Rings **11**, **12** and Sliding Rings **10** on the Piston **9** (*Table 1*).
4. Insert Piston **9** into the Cylinder **2**.
5. Use a small amount of grease (LOCTITE 8150) on inside thread of Cylinder **2** and outside thread of Tail Screw **3** (*Photo 1*).



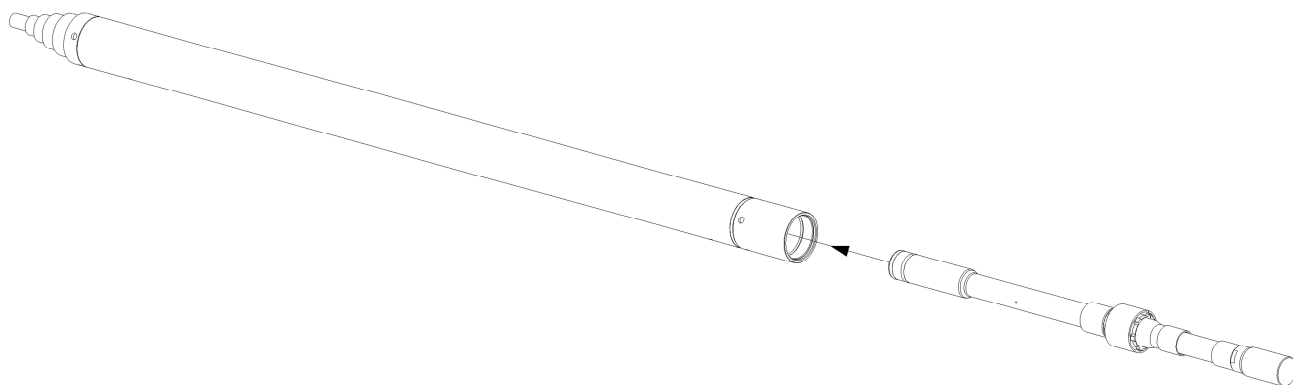
*Photo 1.*

6. Screw Tail Screw **3** to the Cylinder **2**. Use Tools **6**, **7** and hammer **8**.



**Drawing 7.** Assembly of Tail Screw

7. Insert Controller **5** into the Cylinder **2**.

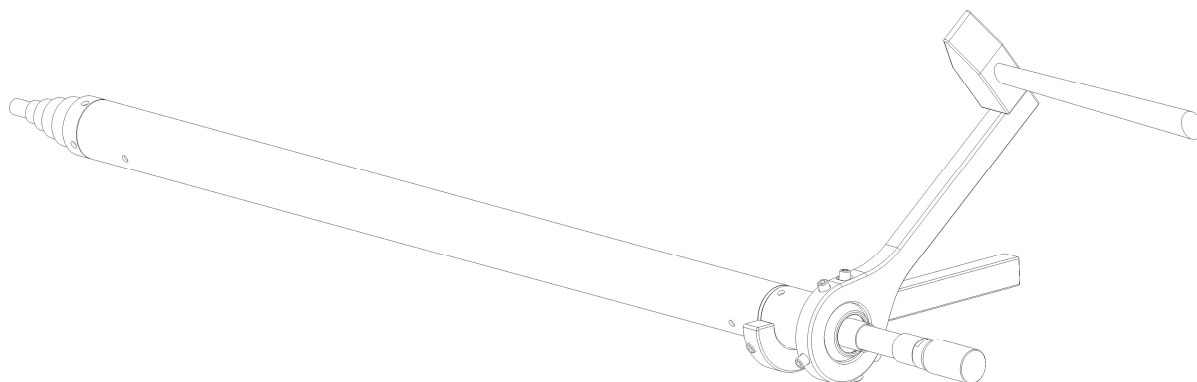


***Drawing 8. Assembly of Controller***

8. Screw End Screw **4** to the Tail Screw **3**. Use thread sealing (LOCTITE 55) like on Photo 2. Use hammer (*Drawing 9*).



***Photo 2.***



***Drawing 9. Assembly of End Screw.***