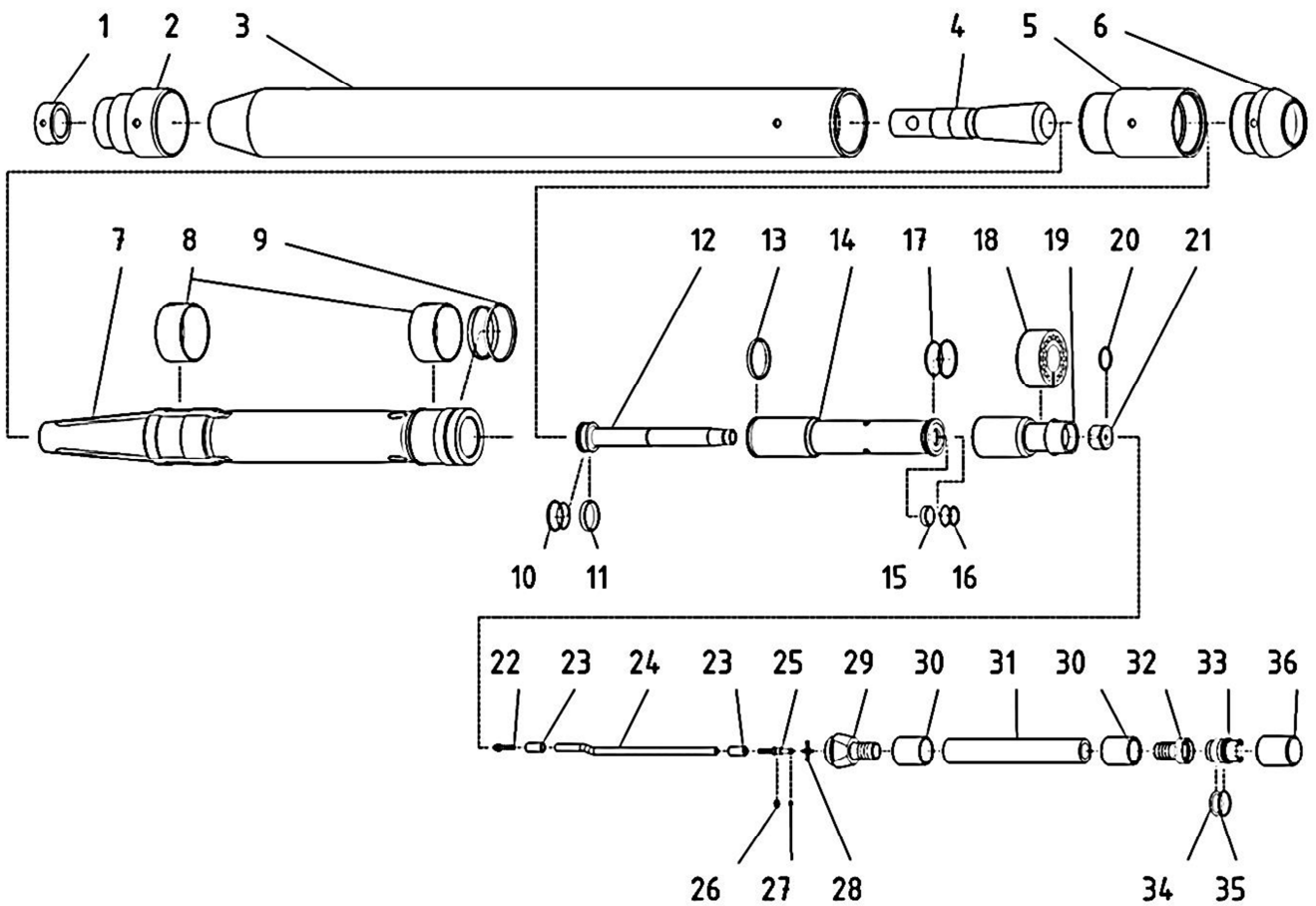




TERMA
SINCE 1990

MAX *Impact Power*
K130S SPARE PARTS



No.	Name	Item number	QTY
1.	Head nut	PMNAK-M130-00.09-M1	1
2.	Chisel head	PMNAS-M130-00.01	1
3.	Cylinder	PMCYL-M130-00.02-M4	1
4.	Chisel	PMPRZ-M130-00.08	1
5.	Tail screw	PMTSR-M130-00.03	1
6.	End screw	PMWKR-M130-00.04	1
7.	Main Piston	PMBIJ-M130-00.05-M1	1
8.	Piston sliding ring	PMPRB-M130-00.06, PMPRB-M130-00.06	2
9.	Piston sealing set (1x teflon, 2 x O-ring 95x3)	PMUSB-M130-00.07, MTSORSI0010, MTSORSI0010	1
10.	Seal ring set (1x teflon, 1x O-ring 45x3)	PMUS1-S130-00.02, MTSORNB0043	1
11.	Sliding ring	PMPT1-S130-00.12	1
12.	Steering tube	PMRUS-S130-00.03-M4	1
13.	Piston seal	PMUTS-S130-00.01	1
14.	Control piston	PMTLS-S130-00.13-M5	1
15.	Control sliding ring II	PMPT2-S130-00.04	1
16.	Control seal set III (1x teflon, 1x O-ring 34x3)	PMUS2-S130-00.05, MTSORNB0034	1
17.	Control seal II set (1x teflon. 1x O-ring 60x3)	PMUS2-S130-00.06, MTSORNB0052	1
18.	Connection block	PMLST-S130-00.10	1
19.	Steering cylinder	PMCYLSTR-S130-00.07-M5	1
20.	Tube seal (O-ring 38x3)	MTSORNB0037	1
21.	Tee piece	PMROS-S130-00.08	1
22.	Control hose connection	PMKWC-S130-00.09	1
23.	Control hose injection sleeve	PMTULZW-W130-00.11-M1 PMTULZW-W130-00.11-M1	2
24.	Control tube	MTSWG0006	1
25.	Control tube connection nipple	PMLWCM-W130-00.07	1
26.	Control tube security	MMEMNPZ0002	1
27.	Control tube seal (O-ring 6x2)	MTSORNB0054	1
28.	Steering hose guide piece	PMWWC-W130-00.08	1
29.	Hose connection	PMKWG-S130-00.11	1
30.	Hose sleeve	PMTULZW-W130-00.10-M1 PMTULZW-W130-00.10-M1	2
31.	Hose	MTSWG0004	1
32.	Hose connector	PMLWG-W130-00.04	1
33.	Screw	PMSRB-W130-00.05-M1	1
34.	Seal I (O-ring 36x5)	MTSORNB0036	1
35.	Seal II (O-ring 40,2x3)	MTSORNB0039	1
36.	End cap (f.)	PMZAZ-W130-00.06-M1	1
37.	Short control tube set (Pos. 22, 23 x 2, 24, 25, 27)	PMWKC130K	1
38.	Short hose set (Pos. 29, 30 x 2, 31, 32)	WAGZ130	1
...	Seal kit M130 small (Pos. 8, 9, 13)	WAUM130M	1
...	Seal kit M130 (Pos.8,9,10,11,13,15,16,17,20,27,34,35)	WAUK130	1

Your Local Dealer:

.....

.....

.....

.....

.....