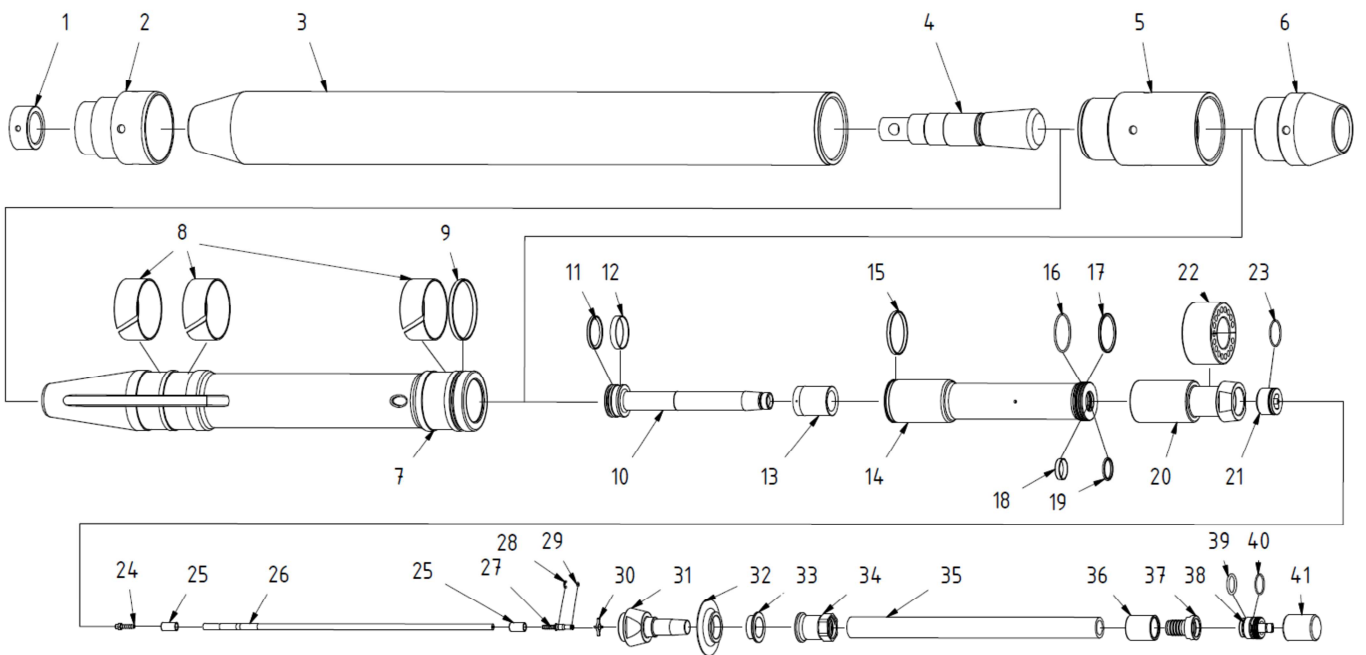




TERMA
SINCE 1990

MAX *Impact Power*
K160S SPARE PARTS



Nr	Description	Item number	Pcs
1.	Head Nut	PMNAK-M160-00.09	1
2.	Chisel Head	PMNAS-M160-00.01	1
3.	Cylinder	PMCYL-M160-00.02	1
4.	Chisel	PMPRZ-M160-00.08	1
5.	Tail Screw	PMTSR-M160-00.03	1
6.	End Screw	WAHW160	1
7.	Piston	PMBIJ-M160-00.05	1
8.	Piston Sliding Ring	PMPRB-M160-00.06, PMPRB-M160-00.06, PMPRB-M160-00.06	3
9.	Piston o-rings and teflon set (1x teflon + 2x o-ring 121x3,5)	PMUSB-M160-00.07, MTSORSI0029, MTSORSI0029	1
10.	Steering tube	PMRUS-S160-00.06	1
11.	Sealing ring set III (1x teflon + 1x o-ring 58x5)	PMUS1-S160-00.04, MTSORNB0083	1
12.	Piston Sliding Ring	PMPT1-S160-00.13	1
13.	Damper	PMAMOR-S160-00.14	1
14.	Steering Piston	PMTLS-S160-00.01	1
15.	Steering Sealing ring I	PMUTS-S160-00.02	1
16.	Steering Cylinder Seal (o-ring 77x3,5)	MTSORSI0032	1
17.	Steering Sealing set II (1x Teflon, 1x o-ring 74x3,5)	PMUS2-S160-00.03, MTSORSI0031	1
18.	Control Sliding Ring I	PMPT2-S160-00.05	1
19.	Steering Sealing Set IV (1x Teflon, 1x o-ring 44,7x3)	PMUS3-S160-00.15, MTSORSI0034	1
20.	Steering Cylinder	PMCYLSTR-S160-00.07	1
21.	Tee piece	PMROS-S160-00.09	1
22.	Connection block	PMLSR-S160-00.08	1
23.	Tube Seal (o-ring 52x3)	MTSORSI0030	1
24.	Control hose connection	PMKWC-S130-00.09	1
25.	Control tube connection nipple	PMTULZW-W130-00.11-M1	2
26.	Control Tube	MTSWG0006	1
27.	Control hose guide piece	PMLWCM-W130-00.07	1
28.	Control Tube Security	MMEMNPZ0002	1
29.	Control Tube seal (o-ring 6x2)	MTSORN0054	1
30.	Hose connection	PMWWC-W130-00.08	1
31.	Hose Connector	PMKWG-S160-00.10	1
32.	Exhaust Valve	MTSORIU0021	1
33.	Thrust Washer	PMPDKS-S160-00.12-P1	1
34.	Hose Nut	PMNKKWG-S180-00.16	1
35.	Hose	MTSWG0013	0,6m
36.	Hose Sleeve	PMTULZW-W130-00.10-M1	1
37.	Hose Connector II	PMLWG-W130-00.04	1
38.	Screw	PMSRB-W130-00.05-M1	1
39.	Seal I (o-ring 36x5)	MTSORN0036	1
40.	Seal II (o-ring 40,2x3)	MTSORN0039	1
41.	End Cap F	PMZAZ-W130-00.06-M1	1

Your Local Dealer:

.....
.....
.....
.....
.....