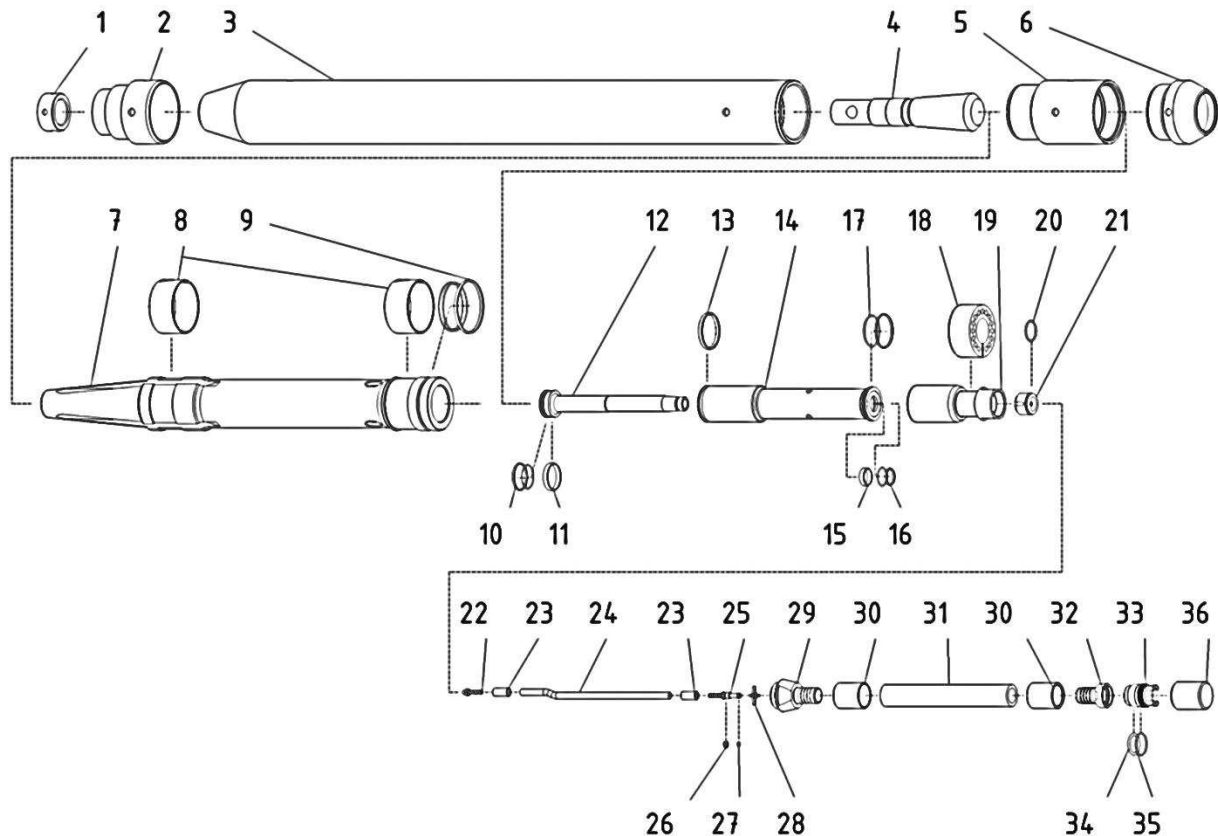


## MAX K130S – replacement of Short hose



1. Unscrew End screw **(6)** using Round tool and hook tool.
2. Remove End screw **(6)** then remove Controller by pulling the hose **(31)**.
3. Mount Controller in clamp, by holding the controller for the Hose connector **(32)**.
4. Unscrew the Screw **(33)** using special service tool. Remove Screw **(33)**.
5. Remove the Control tube security **(26)** from Control tube connection nipple **(25)**. Remove the Control tube guide piece **(28)**. Remove the Controller from clamp.
6. Mount the Controller in clamp vertically, by holding the Steering cylinder **(19)**.
7. Unscrew the Hose connection **(29)** from Steering cylinder **(19)** using Open end wrench s=50 mm.

Assembly should be carried out in reverse order. All threaded connections should be secured against loosening by protective sealant (we recommended LOCTITE 577).

### CONTACT:

tel.: +48 58 / 694 05 15  
tel.kom.: 607 451 902

fax: +48 58 / 694 05 96  
tel.kom.: 607 451 900

mail: kret@terma-max.com  
tel. kom.: 607 451 433